



Concrete Picnic table Standard Anthracite

Product code: PS.ST.A

£ 2,650.00 excl. VAT
(£ 3,180.00 incl. VAT)

With how sleek the appearance is, this picnic set seems to be made of plastic. However, nothing could be further from the truth. This set is made of a single piece of concrete and then spray painted with lacquer in an anthracite colour. This makes the table easy to clean and the natural concrete look has been changed into a sleek and chic design.

Picnic set and the base plate

This beautiful picnic set standard in anthracite colour is ideal for placement at rest areas for motorists or cyclists. This table looks great at the side of the road or in a park, but also at home in your own garden. Because the table is heavy and cannot be dismantled, it is insensitive to vandalism. When the picnic set is placed on an unstable surface, we advise you to make use of the base plate. This base plate is specifically designed for this picnic set, so that the table can be placed stably on the surface. A nice bonus: the base plate makes mowing the lawn around the table easier!

Picnic sets, game tables and benches from HeBlad

If you want to turn your site into a true gaming palace, then you have come to the right place! Monitored or unattended makes no difference to HeBlad products. Because our game tables, benches, ping-pong tables and picnic sets are mostly cast from a single piece of concrete, they are impervious to vandalism and are specifically designed to last for years outdoors. This allows you to easily combine multiple tables, benches and game tables on one site and you never have to worry about the usability or lifespan of your purchase.

20 June 2026 - Prices subject to change

Our products are delivered from our factory in the Netherlands.



correspondence address

HeBlad - UK

Spaces Acero, 1 Concourse Way
S1 2BJ Sheffield, South Yorkshire
T. 0114 352 0110
info@HeBlad.co.uk
www.HeBlad.co.uk

head office address

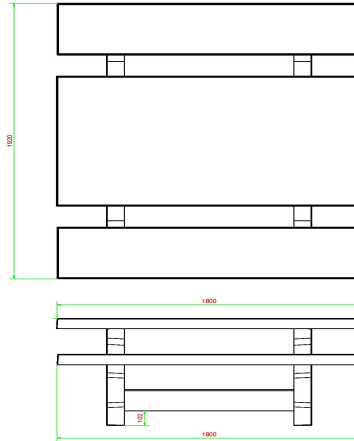
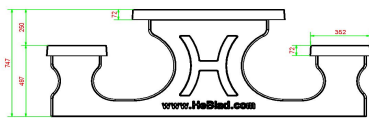
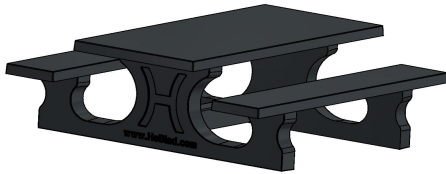
HeBlad BV

Diamantweg 22
NL - 5527 LC Hapert

Delivery of the picnic sets

Picnic sets and other robust HeBlad products are often available from stock, which means fast delivery. You can enjoy the picnic set no later than 4 working weeks after placing your order. We care about our products, so we treat them with care. This also applies when the tables and benches are transported and installed. We have drawn up a number of delivery conditions for you for this purpose. If you have any questions or doubts, always contact us.

Our products are delivered from our factory in the Netherlands.



HeBlad
www.HeBlad.com
PS.ST.A
± 905 KG.

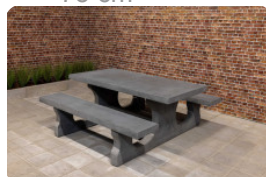
Specifications Concrete Picnic table Standard Anthracite

Product code	PS.ST.A	Seat height	50 cm
Colour	Anthracite lacquered, RAL 7016	Material seat	Concrete
Dimensions (L x W x H)	180 x 192 x 75 cm	Distance legs	111 cm (center to center)
Dimensions tabletop (L x W)	180 x 90 cm	Weight	905 kg
Tabletop thickness	7 cm	Number of seats	8

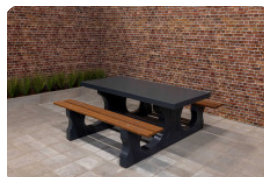
Related products



PS.ST



PS.ST.AB



PS.DL.A



OP.PS.AB



PS.STA.OV

Our products are delivered from our factory in the Netherlands.