



Picnic set DeLuxe 246cm

Product code: PS.DL.246

£ 3,200.00 excl. VAT
(£ 3,840.00 incl. VAT)

An extra long table with multiple seats. The bamboo seats in this DeLuxe version give the table a luxurious look and offer a softer seat to the visitors of the picnic set. Just like the robust concrete from which the picnic set is made, the bamboo is also weather-resistant and will last for years.

Loose planks for the Picnic Set Deluxe 246 cm.

What to do if a plank breaks or becomes damaged? We understand that bamboo is slightly less sturdy than concrete, which is why you can also order separate planks from us for the DeLuxe picnic set 246 cm. You can easily assemble the shelves yourself, but do not hesitate to contact us for assembly assistance. This can be done remotely or on location.

What are alternatives to the DeLuxe Picnic Set 246 cm?

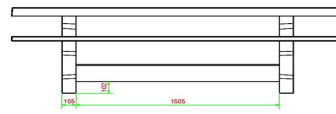
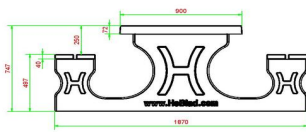
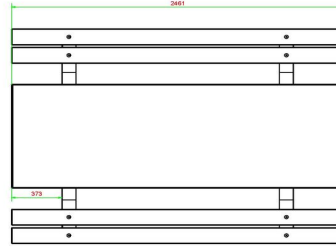
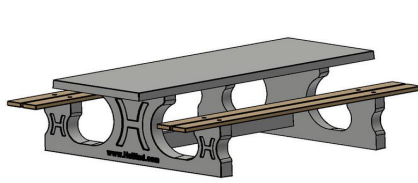
If you believe that the 246 cm picnic set is too large for the terrain on which you want to place the set, you can always choose a different variant. We also have the DeLuxe Picnic Set in standard sizes. The same beautiful natural concrete colour and also beautiful bamboo seats. This set offers slightly fewer seats, but therefore fits on any playground, campsite or other outdoor area. Is it not big enough for you? Then we advise you to take a look at the Picnic Set Standard XL. This could accommodate an entire football team. The table is 450 cm long, which also applies to the seating area.

Questions about the Picnic Set

Do you have questions about the specifications of HeBlad picnic sets or would you like to combine multiple products and thus benefit from attractive discounts? Please feel free to contact us. We are happy to advise you.

20 May 2026 - Prices subject to change

Our products are delivered from our factory in the Netherlands.



HeBlad
www.HeBlad.com
PS.DL.246
± 875 KG.

Specifications Picnic set DeLuxe 246cm

Product code	PS.DL.246	Seat height	50 cm
Colour	Natural concrete	Material seat	Bamboo
Dimensions (L x W x H)	246 x 193 x 75 cm	Distance legs	161 cm (center to center)
Dimensions tabletop (L x W)	246 x 90 cm	Weight	880 kg
Tabletop thickness	7 cm	Number of seats	10
Height tabletop	75 cm		

Related products



PS.STAB.246



PS.ST.246

Our products are delivered from our factory in the Netherlands.