



Picnic table Standard Anthracite-Concrete

Product code: PS.ST.AB

£ 2,700.00 excl. VAT
(£ 3,240.00 incl. VAT)

Robust concrete and cast in one piece, yet a very refined appearance. This standard anthracite concrete picnic set provides seating for your visitors, is weather-resistant and serve as as a true eye-catcher. Destruction of the picnic set is not plausible due to the strength and weight of the set. This means that the product will retain its chic appearance for years to come and you can enjoy the picnic set all the while.

Specifications of Picnic Set Standard

The picnic sets from HeBlad have the perfect seat height of 50 cm and the ideal table height of 75 cm. The size of the complete set is 180 x 192 x 75 cm and it has a weight of 905 kg. Because the anthracite colour is incorporated into the concrete, the colour will always remain beautiful, even in the case of damage. Weather and vandalism have no influence on this picnic set, which makes it ideal for years of intensive outdoor use and can easily be placed in an unattended location.

Picnic sets and ping pong tables from HeBlad

HeBlad became big through the production of ping pong tables, but is now so much more. We are making more and more products for the outdoors, all include the reliability you have come to expect from us. Our unity in design is why it's easy to combine our products when you have the room. This way you can place the standard anthracite concrete picnic set perfectly next to the anthracite concrete ping pong table. With the same naturally chic look you give your site an extra dimension. The ping pong table round anthracite concrete or the ping pong

13 June 2026 - Prices subject to change

Our products are delivered from our factory in the Netherlands.



correspondence address

HeBlad - UK

Spaces Acero, 1 Concourse Way
S1 2BJ Sheffield, South Yorkshire
T. 0114 352 0110
info@HeBlad.co.uk
www.HeBlad.co.uk

head office address

HeBlad BV

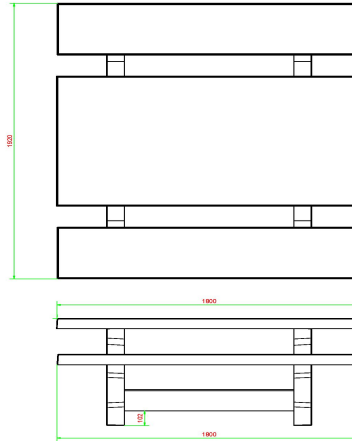
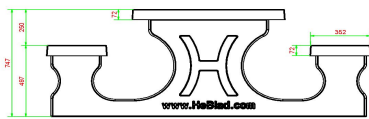
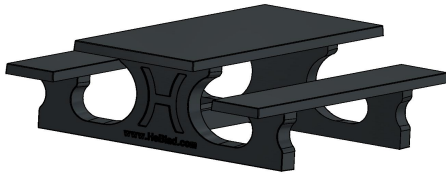
Diamantweg 22
NL - 5527 LC Hapert

table rounded anthracite concrete also match this picnic set perfectly because of the colour and appearance.

Ask your questions about the picnic sets

Due to the size of the picnic sets, it is good to be sure whether the table actually fits on your site and whether it can be placed. For this we refer you to the delivery conditions or advise you to contact HeBlad.

Our products are delivered from our factory in the Netherlands.



HeBlad
www.HeBlad.com
PS.ST.AB
± 905 KG.

Specifications Picnic table Standard Anthracite-Concrete

Product code	PS.ST.AB	Seat height	50 cm
Colour	Anthracite concrete	Material seat	Concrete
Dimensions (L x W x H)	180 x 192 x 75 cm	Distance legs	111 cm (center to center)
Dimensions tabletop (L x W)	180 x 90 cm	Weight	905 kg
Tabletop thickness	7 cm	Number of seats	8

Related products 75 cm



PS.STAB.OV



PS.ST.A



PS.DLAB



OP.PS.AB



PS.STAB.OV

Our products are delivered from our factory in the Netherlands.